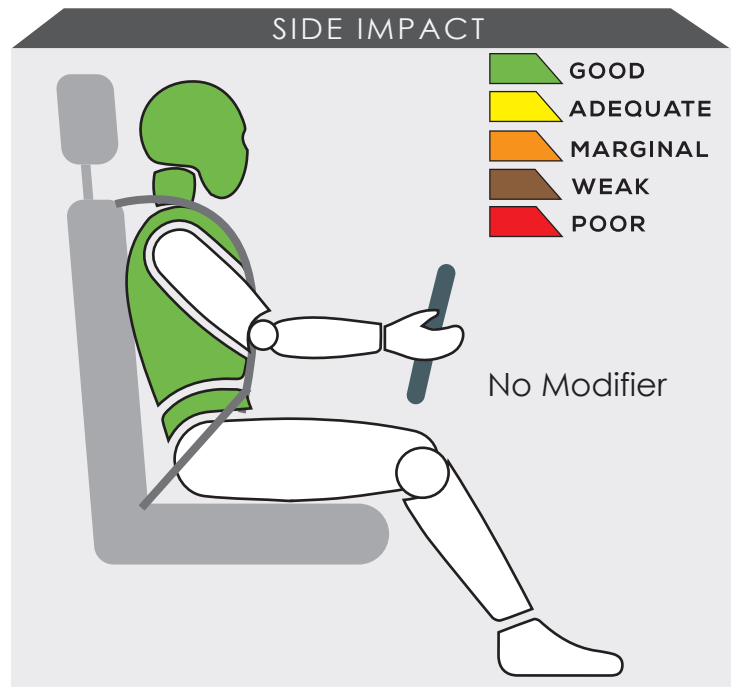
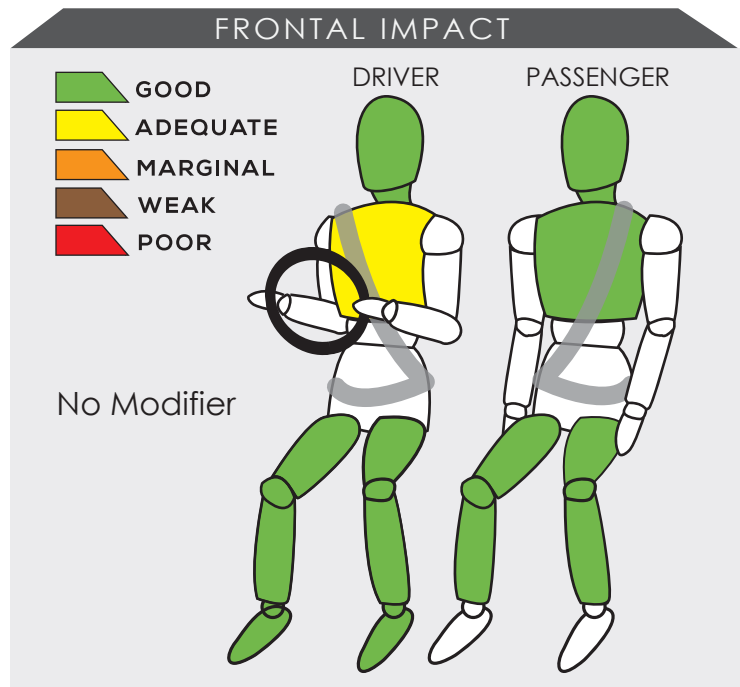


# TOYOTA C-HR



Variant <b>1.8 Mid</b>	Year Built <b>2018</b>
Model Year <b>2018</b>	Vehicle Category <b>HATCHBACK</b>
Engine Capacity <b>1.8 L</b>	Kerb Mass <b>1410 kg</b>
No. of Airbags <b>7</b>	Test Lab <b>JARI</b>


TESTED VARIANT ORIGIN	THAILAND	FOR	THAILAND
OTHER ASEAN PRODUCTION (ALL VARIANTS)	THAILAND	FOR	BRUNEI, MALAYSIA, THAILAND, INDONESIA
	JAPAN		SINGAPORE



The passenger compartment of the vehicle remained stable in the frontal offset test. Data from the dummy showed the tested vehicle provided good protection to both the driver and front passenger except for the driver's chest.

The performance of HPT was confirmed with additional deployment test and its score was determined based on Fitment Rating System (FRS).

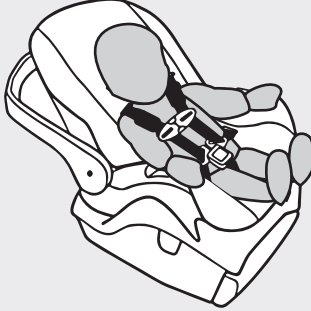

## SAFETY ITEMS (PASSIVE)

ITEMS	COUNTRIES											
		TH	ID	KB	LA	MY	MM	PH	SG	TH	VN	
Airbags	Driver	S	S	NS	NS	S	NS	NS	S	S	NS	
	Passenger	S	S	NS	NS	S	NS	NS	S	S	NS	
	Side (2)	S	S	NS	NS	S	NS	NS	S	S	NS	
	Curtain (2)	S	S	NS	NS	S	NS	NS	S	S	NS	
	Knee (1)	S	S	NS	NS	S	NS	NS	S	S	NS	
Seatbelts	Retractor Pre-tensioner & Load Limiter for Driver	S	S	NS	NS	S	NS	NS	S	S	NS	
	Retractor Pre-tensioner & Load Limiter for Passenger	S	S	NS	NS	S	NS	NS	S	S	NS	

S : Standard on all variants, O : Optional on base; Standard on higher variants, X : Not available, TBA : To be advised, NS : Not sold



### DYNAMIC TEST ASSESSMENT

18-MONTH-OLD CHILD		3-YEAR-OLD CHILD	
<b>Restraint</b>	: Takata MINI	<b>Restraint</b>	: Takata MIDI I-SIZE
<b>Facing</b>	: Rearward Facing	<b>Facing</b>	: Forward Facing
<b>Installation</b>	: ISOFIX & Supportleg	<b>Installation</b>	: ISOFIX & Supportleg
			
<b>Frontal Impact</b>	: 8.00	<b>Frontal Impact</b>	: 5.45
<b>Side Impact</b>	: 4.00	<b>Side Impact</b>	: 4.00
<b>Total Performance</b>	: 12.00	<b>Total Performance</b>	: 9.45

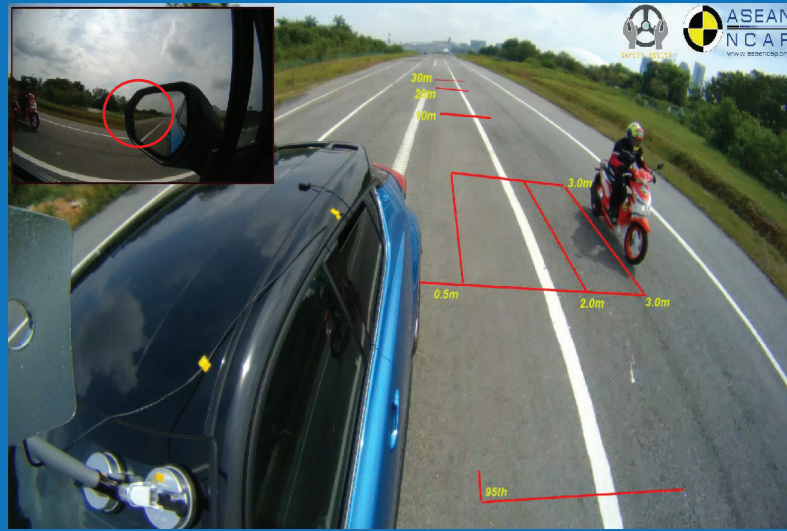
## CRS INSTALLATION ASSESSMENT

CRS	DIRECTION	SEAT POSITION						
		FRONT	2ND ROW			3RD ROW		
		PASSENGER	LEFT	CENTRE	RIGHT	LEFT	CENTRE	RIGHT
Maxi Cosi Cabriofix	Rwd	EXEMPT	PASS	PASS	PASS	N/A	N/A	N/A
Combi Malgot	Rwd	EXEMPT	PASS	PASS	PASS	N/A	N/A	N/A
Combi Malgot	Fwd	PASS	PASS	PASS	PASS	N/A	N/A	N/A
Combi Buon Junior Air	Fwd	PASS	PASS	FAIL	PASS	N/A	N/A	N/A
Britax Baby Safe Plus ISOFIX Base	Rwd	EXEMPT	PASS	EXEMPT	PASS	N/A	N/A	N/A
Maxi Cosi Milofix	Rwd	EXEMPT	PASS	EXEMPT	PASS	N/A	N/A	N/A
Maxi Cosi Milofix	Fwd	EXEMPT	PASS	EXEMPT	PASS	N/A	N/A	N/A
Britax Duo Plus	Fwd	EXEMPT	PASS	EXEMPT	PASS	N/A	N/A	N/A
Britax KidFix XP	Fwd	PASS	PASS	FAIL	PASS	N/A	N/A	N/A
Takata MINI*	Rwd	EXEMPT	PASS	EXEMPT	PASS	N/A	N/A	N/A
Takata MIDI I-SIZE*	Fwd	EXEMPT	PASS	EXEMPT	PASS	N/A	N/A	N/A

PASS : Install without problem, FAIL : Safety critical problem, EXEMPT : Installation not allowed, N/A : Not available  
\*Manufacturer's selection



## BLIND SPOT TECHNOLOGY ASSESSMENT



Since 2017, ASEAN NCAP has introduced Blind Spot Technology (BST) in its new protocol. In this protocol, ASEAN NCAP assessed the functionality of each BST introduced in the car. The Toyota C-HR has equipped BST as standard parts in Malaysia, Indonesia and Singapore. However, the part is an option in Thailand while the technology is not available in Brunei. In this assessment, ASEAN NCAP confirms that the technology has functioned according to ASEAN NCAP requirements on both the left and right side area.

